

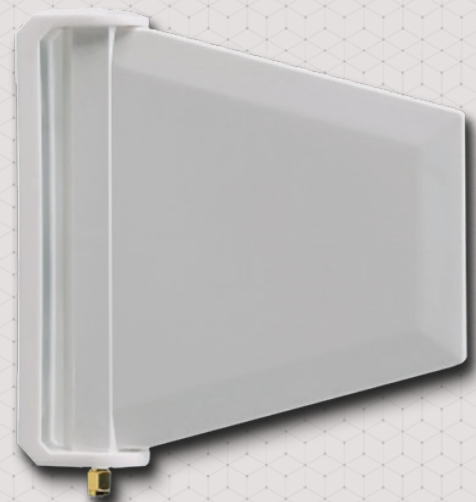
DIRECTIONAL 4G LTE ANTENNA



Outdoor and indoor, four-band, directional LTE antenna (WLQ-4G)

TECHNICAL FEATURES

- Technology: GSM / GPRS / UMTS / LTE
- Frequency: 760–960 MHz, 1700–2700 MHz
- Impedance: 50 Ω
- Gain: 4 dBi
- VSWR: < 1.7 : 1
- Output power: max. 15W
- Polarization: Vertical
- Type: Directional antenna
- Front-back ratio: >12 dB
- Max. wind speed: 25 m/s
- Connector: SMA male
- Material (Antenna): ABS / FR4
- Material (Reflector base): Aluminum / Copper
- Bracket / mounting element: wall-mounted
- Dimensions: 137 x 147 x 22
- Weight: 115gr
- Operating temperature: from -40 to +70 Celsius degree



By default, the antenna does not contains an antenna cable.

For the proper operation it requires an antenna cable with SMA-SMA connector outfit. The cable can be ordered from 1m to 10m long cable by the requirements.

Ask our sales!

The presented images on the datasheet are for illustration purposes only. The details on the data sheet are for general information purposes only. WM Systems LLC cannot be held liable for erroneous information on the datasheet. The announced information are subject to change without notice. For more details, please contact us.

WM Systems LLC

8 Villa str., Budapest, H-1222 HUNGARY

Phone: +36 (1) 310 7075

Support: +36 (20) 333 1111

Our website: www.wmsystems.hu

Sales inquiry: intersales@wmsystems.hu

Support: support@wmsystems.hu