

WM-i 4-20mA



Long-life battery powered cellular IoT data logger and DCU for analog sensors

Robust, ultra low-power cellular IoT data logger and data concentrator (DCU), which comes with a built-in LTE Cat.M, NB-IoT cellular module ensuring reliable data transfer in any environment. The device can be connected to two sensors due to its analog inputs (4..20mA or 0-10V).

Easily upgrade existing meters and sensors with cellular connectivity, safeguarding your investments without the need for costly replacements!

Offering a standalone operation, it performs reliable automated sensor or meter readings. The device allows connection of 2 analogue sensors through its inputs.

The WM-i receives and collects signals of connected two sensors, then it transfers all data at predetermined intervals via MQTT to the Microsoft® Azure IoT platform with TLS encryption through the LTE Cat.M / NB-IoT network.

The easily installable device was designed for long-term, maintenance-free operation, the WM-i boasts a high-capacity battery lasting up to 10 years and an IP68 waterproof casing, making it ideal for challenging environments. Optionally, add-on extension possibilities are available to extend capabilities for PoCs, unique orders (e.g. different connections, adding sensors).



MAIN FEATURES

- IP68-protected casing with fastening points
- LTE Cat.M / Cat.NB / 450MHz cellular module with Nano SIM slot
- Replaceable, high-capacity battery with up to 10 years lifetime
- Connections:
 - 2pcs analog inputs, which supports 0..20mA / 4..20mA current loop output sensors or 0..10V / 1..10V voltage output sensors
 - USB-C port (for local configuration and installation)
- Internal antenna (mounted inside of casing)
- Tamper protection (security alarm if cover is tampered) – optional
- Cold start (supporting the installation)
- Automatic / configurable mobile operator, bands, access technology
- Automatic data transmission at preconfigured intervals to Microsoft® Azure platform (MQTT protocol, TLS encryption)
- Transfer of sensor identifier, location
- Pre-configured settings at manufacturing
- WM-E Term® software for local configuration, FW updates
- Secure remote configuration / firmware updates via Cloud (TLS)
- “Deployment mode” supports local installation (status checking)

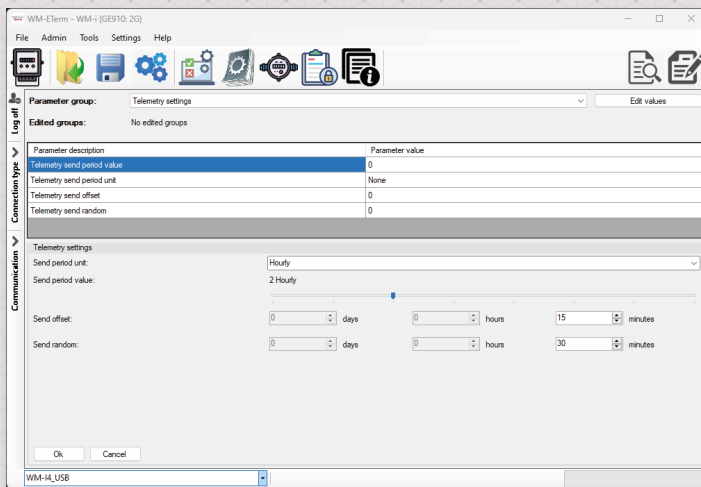
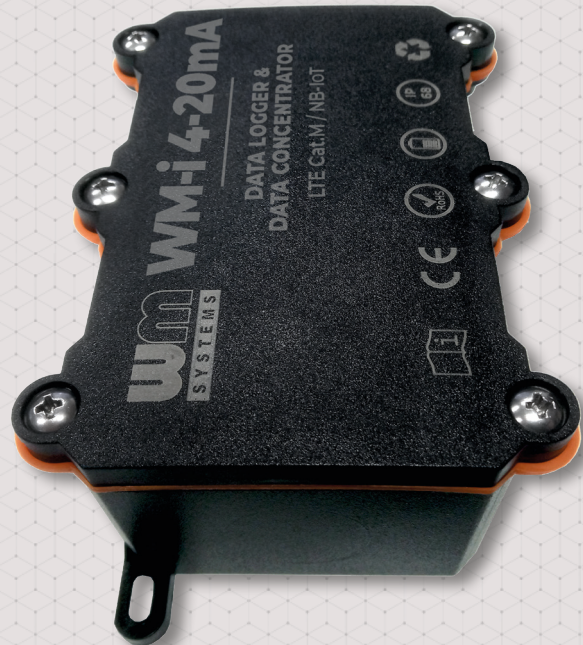
APPLICATION

- SMART METERING
- SMART CITIES
- INDUSTRIAL MEASUREMENT
- INDUSTRIAL AUTOMATION
- IoT APPLICATIONS



ACCESSORIES

- Internal high-capacity battery (19 000 mAh)
- Cable for sensors (order option)
- USB-C cable for configuration (order option)
- WM-E Term[®] configuration software (for local configuration and FW updates)



WM-i 4-20mA [®]		LTE Cat.M / Cat.NB	
Power	Nominal	• 3.6V DC voltage (powered from an internal battery)	
Performance	System	• Cortex-M33 ultra-low powered processor / 2MB Flash / 768kbyte memory	
Communication Module	Cellular module	• Quectel BC95-M2	• Quectel BC95-M4
	Mobile technology	• LTE Cat.M / Cat.NB	• LTE Cat.M / Cat.NB / 450MHz
	Band / Frequency (MHz)	• LTE Cat M1: B1/B2/B3/B4/B5/B8/B12/B13/B18/B19/B20/B25/B26/B27/B28/B66/B85 • LTE Cat NB2: B1/B2/B3/B4/B5/B8/B12/B13/B18/B19/B20/B25/B28/B66/B71/B85	• LTE Cat M1: B1/B2/B3/B4/B5/B8/B12/B13/B18/B19/B20/B25/B26/B27/B28/B31/B66/B72/B73/B85 • LTE Cat NB2: B1/B2/B3/B4/B5/B8/B12/B13/B18/B19/B20/B25/B28/B31/B66/B72/B73/B85
	Speed (DL/UL)	• LTE Cat.M1: 588Kbps (DL) / 118Kbps (UL) • LTE Cat.NB2: 127Kbps (DL) / 158 Kbps (UL) • LTE Cat.NB1: 32Kbps (DL) / 70Kbps (UL)	• LTE Cat.M1: 588Kbps (DL) / 118Kbps (UL) • LTE Cat.NB2: 127Kbps (DL) / 158 Kbps (UL) • LTE Cat.NB1: 32Kbps (DL) / 70Kbps (UL)
SIM card	SIM slot	• Nano SIM card slot (optional eSIM)	
Antenna	Antenna	• Internal LTE antenna (mounted inside of casing)	
Connectivity	Interfaces	• 2pcs analog inputs, which supports 0...20mA / 4...20mA current loop output sensors or 0.10V / 1.10V voltage output sensors • USB-C port (for local configuration and installation)	
	Cabling	• Cable outfit for sensor connections (2 sensors, USB connection, wire end sleeves, internal connector to the device PCB)	
Operation	Operation behaviour	• Automatic data transmission at predetermined intervals to the Microsoft [®] Azure Cloud IoT platform with MQTT protocol, TLS encryption • Transfer of sensor identifier, location • "Deployment mode" that supports local installation (status checking)	
	Communication	• Microsoft [®] Azure platform support • Protocols: SNMP (multiple time servers), HTTP(S) for firmware downloads • Optional protocol support: LWM2M, etc. (in case of PoC)	
	Battery	• High-capacity battery with up to 10 years battery lifetime (depending on settings): D-size (type ER34615, Lithium Thionyl Chloride, 19 000mAh capacity, 3.6V voltage) - *up to settings	
Security	Security features	• Alarm thresholds (min/max consumption) • Cold start (supporting the installation) • Device displacement sensor - activable for PoC • Secure firmware updates (via Cloud IoT platform) • TLS encrypted communication	
Configuration	Setup	• Automatic / configurable mobile operator, bands, access technology • WM E-Term [®] configuration software (password protected local configuration and firmware updates) • Secure remote configuration / firmware updates via Microsoft [®] Azure (with TLS)	
Environment	Operating / Storage	• from -25°C to +70°C at 0 to 95 rel. humidity • -40°C to +80°C at 0 to 95 rel. humidity	
Design	Casing	• IP68-protected design (ABS case, cable outfit) • Mounting with fastening points	
	Dimensions / Weight	• Dimensions - top (W x D x H): 120 x 88 x 50mm • Dimensions - bottom (W x D x H): 155 x 90 x 50mm (with pedestal mount and cable outfit) • Weight: 315 gr	



The presented images on the datasheet are for illustration purposes only. The details on the data sheet are for general information purposes only. WM Systems LLC cannot be held liable for erroneous information on the datasheet. The announced information are subject to change without notice. For more details, please contact us.